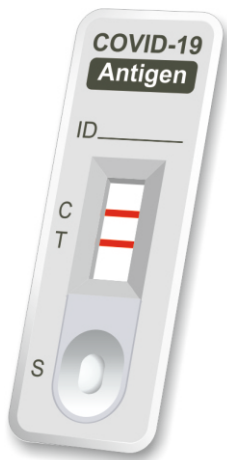


TURNAROUND TIME FOR

COVID-19

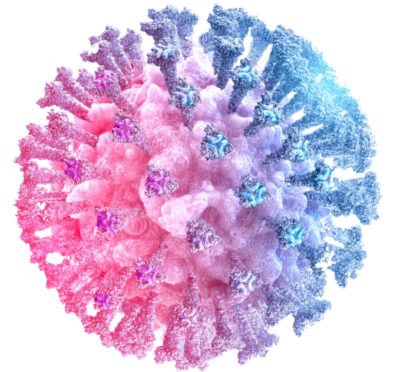
DIAGNOSTIC TESTING IS CRITICAL



COVID-19 Ag

Anterior Nasal or
Nasopharyngeal Swab Sample

DETECT OMICRON



TESTING, TESTING AND RE-TESTING BECAUSE IT MATTERS...

- ...to mitigate life-threatening disease.
- ...to prevent community spread and contain the outbreak.
- ...to isolate and quarantine COVID-19 positive cases.
- ...to identify asymptomatic COVID-19 cases.
- ...to avoid rapidly spreading cases from undetected patients.
- ...to test suspected patients with symptoms, moderate or no symptoms.
- ...to test people with close contact with infected patients.
- ...to re-test people under quarantine control.
- ...to differentiate from common cold, flu and allergies.
- ...to take transmission-based precautions.
- ...to test, trace and treat patients.



Affimedix
Discovering Health Diagnostics for Life®



...Supporting Communities for
COVID-19 Diagnostic Testing.



Affimedix, Inc., a growing Global Medical Device company based in Silicon Valley of California, focuses on R & D, product design, development, manufacturing and marketing of its "Proprietary" Point-Of-Care Tests.

INTENDED USE

TestNOW® - COVID-19 Antigen Test is an *in vitro* diagnostic Rapid COVID-19 Antigen lateral flow immunoassay for the qualitative detection of SARS-CoV-2 virus antigen in human nasopharynx of individuals suspected of COVID-19 infection. The test is intended for professional and laboratory use only as an aid in the rapid diagnosis of SARS-CoV-2 virus infections with Visual Result reading.

The test provides preliminary test results. Negative test results do not rule out other potential non-SARS-CoV-2 viral infections. Negative results should be confirmed by molecular diagnosis if COVID-19 disease is suspected in conjunction with other clinical data available to the physician

TestNOW® - COVID-19 Ag

The laboratory based RT-PCR are highly accurate in spotting infected people when they are administered properly. However, such tests generally require trained personnel, specific reagents and expensive machines that take hours and days to provide results.

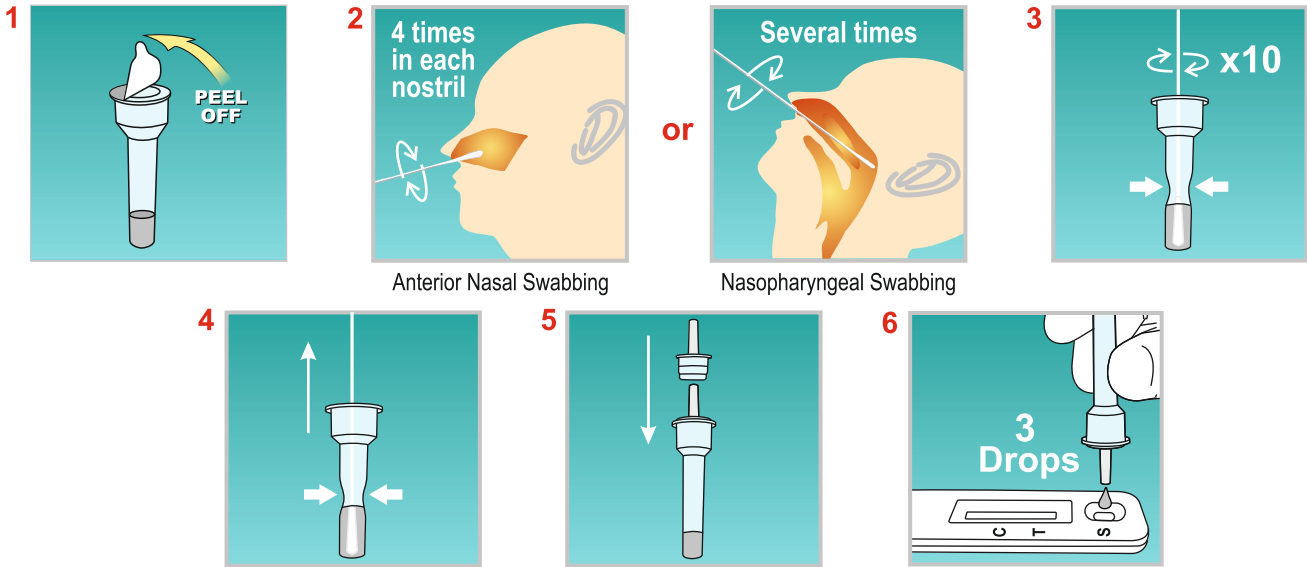
TestNOW® - COVID-19 Ag is easy to use, cost-effective and can be done at point of care in 15 minutes, and could help to rapidly identify people who have high levels of virus - those who are most likely to be infectious to others - and isolate them from the community.

Product Features:

- Detects multiple SARS-CoV-2 Variant strains, including OMICRON.
- Point-Of-Care COVID-19 Diagnostic Testing within first week of the onset of symptoms.
- ONE Swab provides flexibility for Anterior Nasal or Nasopharyngeal Samples.
- Results in Just 15 Minutes - saving crucial time.
- Results are easy and clear to read Visually
- High Clinical Performance:
 - ✓ Sensitivity: 96.1% (vs. RT-PCR-confirmed samples)
 - ✓ Specificity: 99.4%
- Batch Testing - Cost-efficient and timesaver.
- No special facilities or equipment required; test can be used anytime, anywhere.
- No specialized training required to operate.
- Accurate and reliable with consistent results.
- Room temperature stable.
- Aid accurate diagnosis of Acute and Silent COVID-19 infection.

EASY TO USE TEST PROCEDURE

(Consult Instructions for Use for complete procedure)



Read result at 15 minutes

CLEAR RESULT INTERPRETATION

Visual Results



Positive



Negative



Invalid



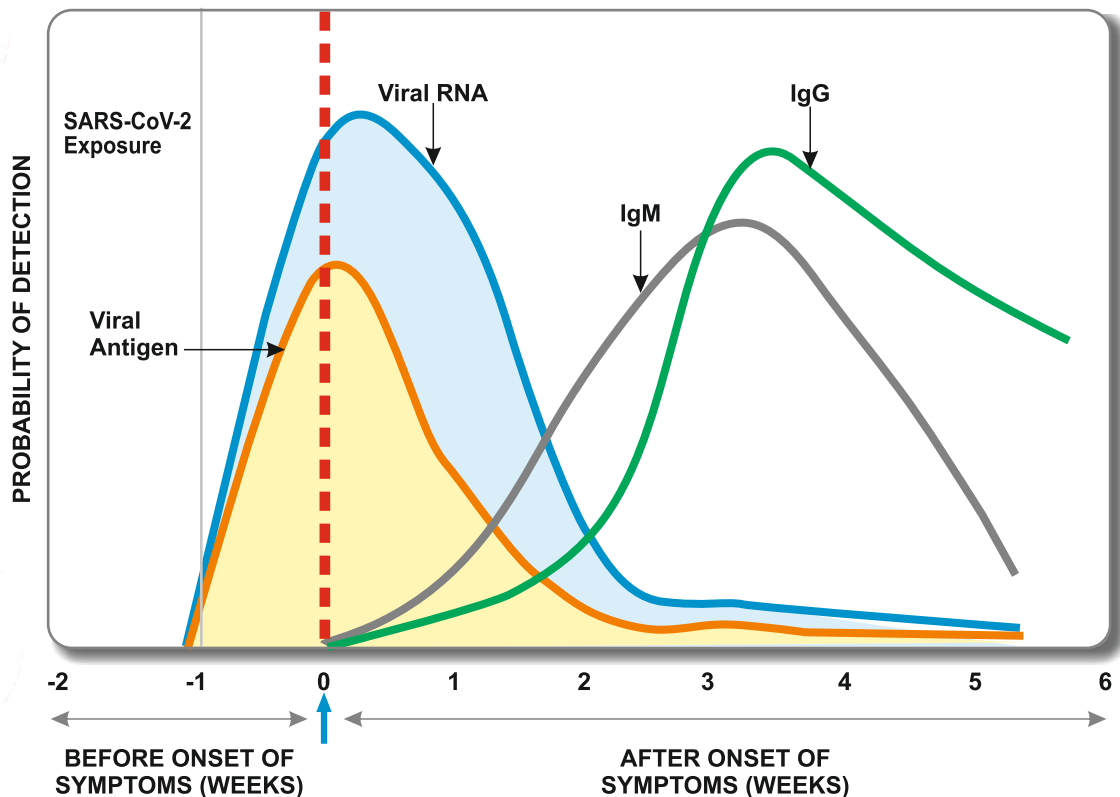
COVID-19 Ag

● Simple ● Rapid ● Accurate ● Affordable ● Reliable ● Accessible

Get Answers; Test NOW, Deploy at different Point-of-Care settings:

- Physician offices
- Urgent care facilities
- Pharmacies
- Airport testing
- Employee testing to return to work
- School health clinics
- Assisted Living Facilities
- Hospital facilities to screen Healthcare Personnel (HCP), Patients and Visitors
- Long-term elderly care facilities and nursing homes
- Temporary locations, such as drive-through sites managed by local organizations
- Routine follow-up testing (Relax Testing)

COVID-19 DETECTION PHASES



Affimedix, Inc.
3556 Investment Boulevard
Hayward, California 94545,
USA

Tel: +1-510-398-8111
Fax: +1-510-398-8132
Email: info@affimedix.com
www.affimedix.com

According to CDC's guidance, COVID-19 antigen test has the best sensitivity from day 1 to day 5 after the onset of symptoms. Antigen levels in specimens collected beyond 5-7 days of the onset of symptoms may drop below the limit of detection of the test.

- **Approved by Paul Ehrlich Institute (PEI), Germany (a WHO Collaborating Center)**
- **Listed on EU HSC agreed Common List and European Commission website for obtaining Green Pass.**